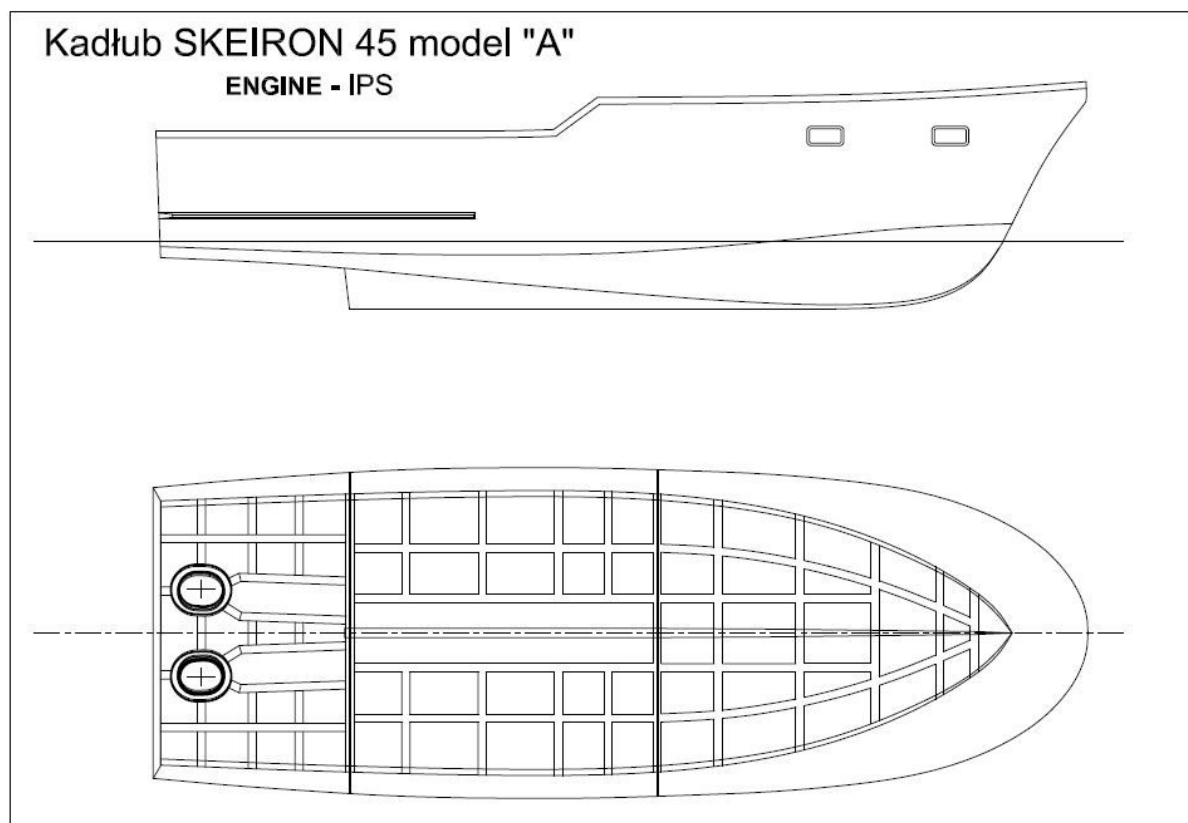


Dane techniczne:

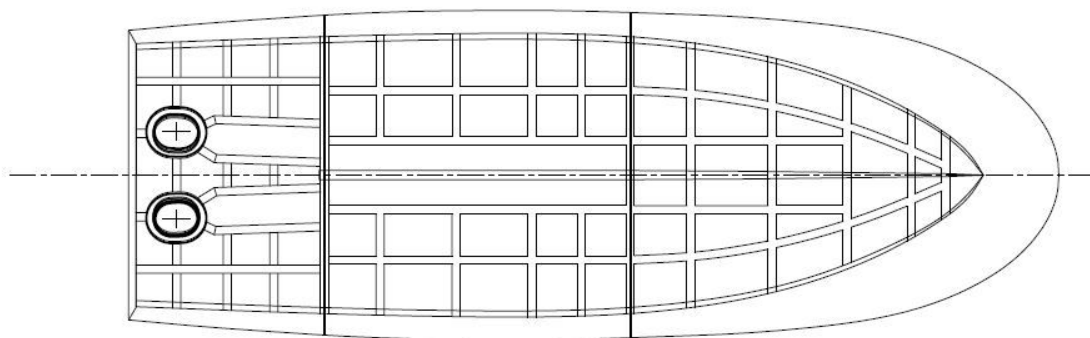
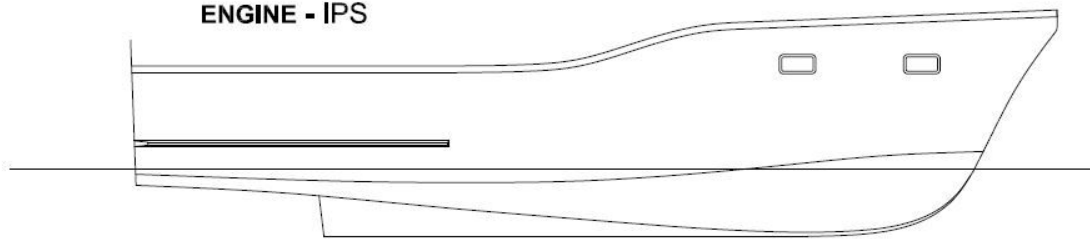
Kadłub Skeiron 45 Engine - IPS

- **Długość (LOA):** 13.70 m
- **Szerokość (Beam):** 4.50 m
- **Wyporność (Displacement):** 17.35 t
- **Zanurzenie (LDM):** 1,0 m
- **Napęd:** 2 x Volvo Penta IPS 500



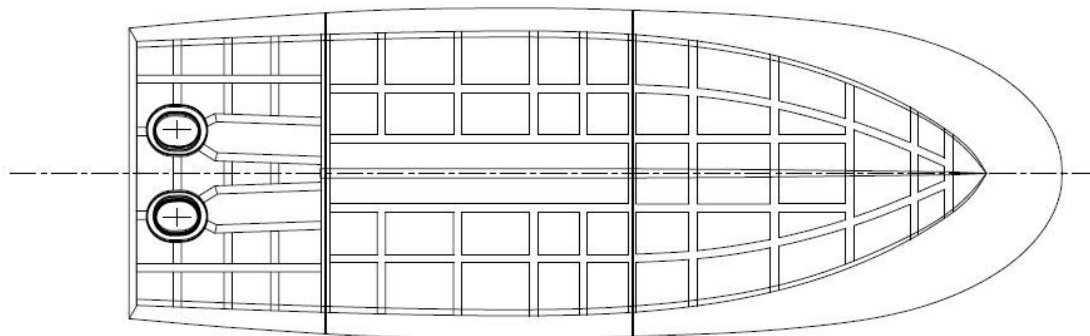
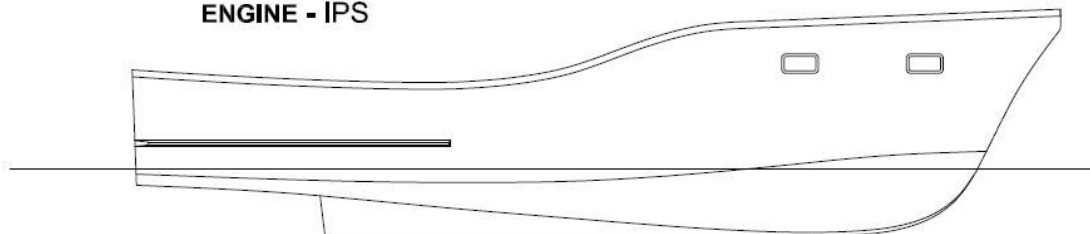
Kadłub SKEIRON 45 model "B"

ENGINE - IPS



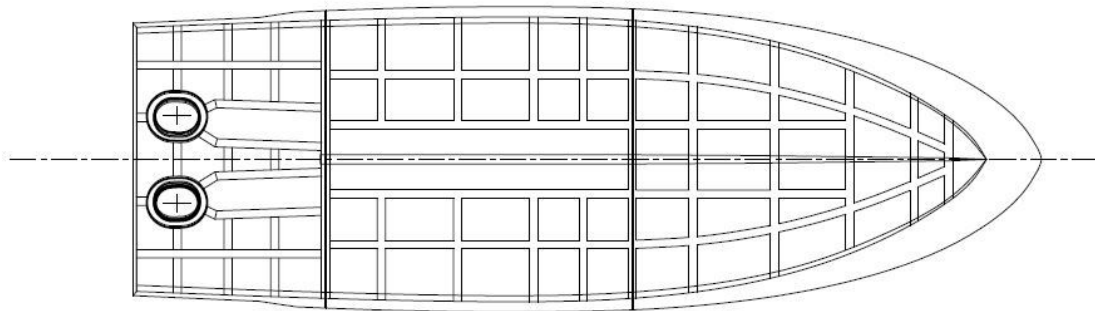
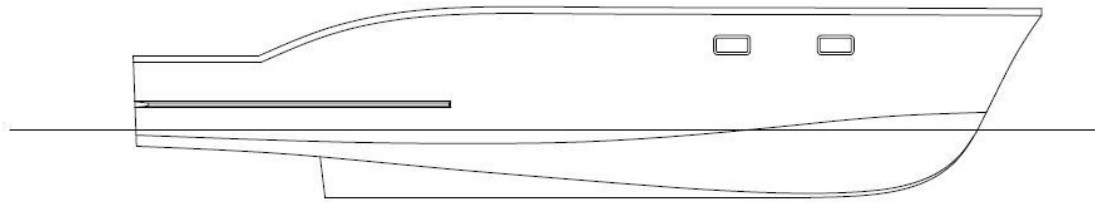
Kadłub SKEIRON 45 model "C"

ENGINE - IPS



Kadłub SKEIRON 45 model "D"

ENGINE - IPS



Kadłub SKEIRON 45 model "E"

ENGINE - IPS

